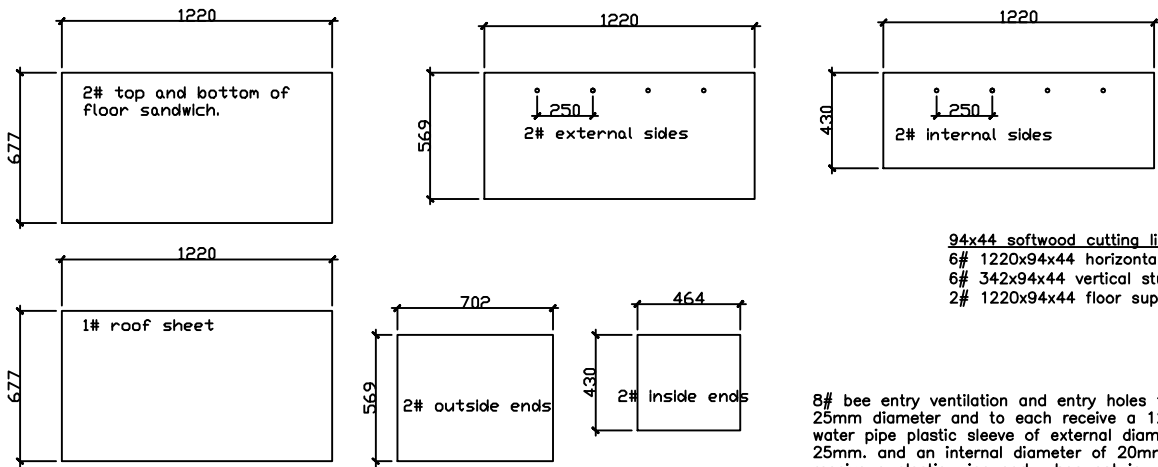


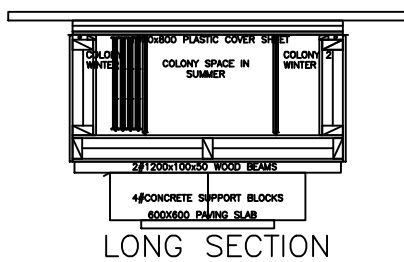
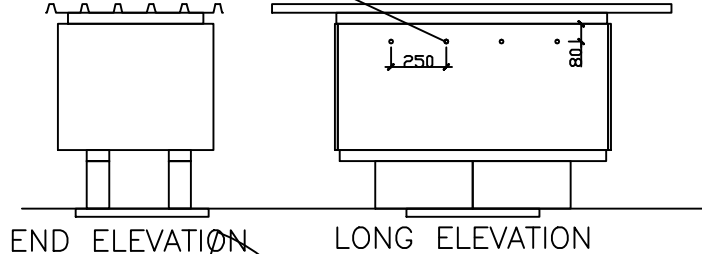
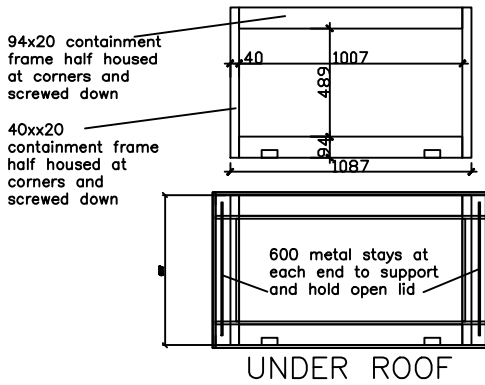
# THE ZEST D.I.Y. HIVE FOR LANGSTROTH WIDTH FRAMES AND WOOD FRAME CONSTRUCTION

## 12.5mm. plywood cutting chart

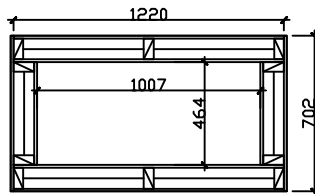
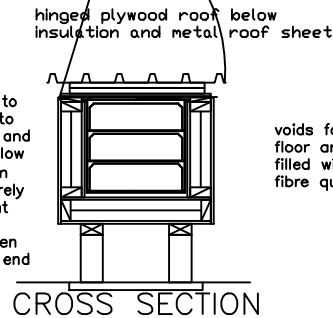


94x44 softwood cutting list.  
 6# 1220x94x44 horizontal studs  
 6# 342x94x44 vertical studs  
 2# 1220x94x44 floor support beams

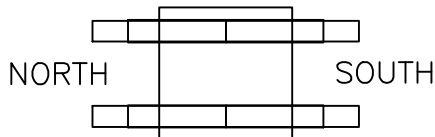
8# bee entry ventilation and entry holes to be 25mm diameter and to each receive a 125mm water pipe plastic sleeve of external diameter of 25mm. and an internal diameter of 20mm. and to receive a plastic wine cork when not in use.



Containment frame to be screw attached to the ply roof above and to the stud wall below and with 2# 100mm butt hinges let entirely into the containment frame.  
 Roof to be held open with stays at each end



**EXTERNAL ENVELOPE PLAN**  
 FLOOR WALLS AND ROOF FORMED FROM 94x44 wood studwork covered in 12 mm plywood as shown



**SUPPORT EXTERNAL ENVELOPE**  
 2# 1200X94X44 TREATED SOFTWOOD BEAMS ON 4# 440X215X100 CONCRETE BLOCKS CANTIVERED OUT OVER EDGES OF 600X600 CONCRETE SLAB.

### Guidance on building your ZEST hive using wood frame construction

1. Clear the ground and level it. Treat it with something unpleasant (like used engine oil) but not dangerous. To prevent burrowing rodents from undermining the foundation slab.
2. Lay the 600x600x38 foundation paving slab. Level with a spirit level. There is only one slab so that any uneven settlement can be easily dealt with by levering it up and repacking with earth to re-level it.
3. Lay the 4# 440x215x100 heavy foundation blocks on the slab as shown on the drawing, being corbelled out from the foundation paving slab.
4. Construct in the workshop the floor, wall and roof panels as shown and formed from 94x44 s.w. and face both sides with 12.5 plywood as shown. Deploy 100mm glassfibre quilt in all the voids.
5. Assemble the 6 panels in the workshop or on the site
6. Deploy 3# plastic cover sheets on the containment frame and bee frames.
7. Lay the 2000x1000 roof sheet and secure with flower pots in a tray.
8. Ventilation and bee access holes of 20mm. (wine cork sized) will need to be drilled through the block approximately 75mm. down where shown on the elevation.